

# WHY CHOOSE LUXEMBOURG?

CHAMBER OF COMMERCE LUXEMBOURG  
cc.lu

LUXEMBOURG LET'S MAKE IT HAPPEN  
luxembourg.public.lu

LUXEMBOURG TRADE & INVEST  
tradeandinvest.lu

## INTERNATIONAL FINANCIAL EXPERTISE



26.5% OF GDP

FROM 26 COUNTRIES



ALMOST 3,500 INVESTMENT FUNDS MANAGE NET ASSETS OF

€5.9 TRILLION (ALFI, 2021)

51,700 EMPLOYEES (STATEC)



CREATED IN 2016.

## Luxembourg Green Exchange

(LGX) IS THE WORLD'S LARGEST PLATFORM FOR GREEN AND SUSTAINABLE SECURITIES.

## DIVERSE ECONOMY

THE CREATIVE INDUSTRIES EMPLOY

14,600 PEOPLE



50% OF COMPANIES IN THE SECTOR ARE UNDER 10 YEARS OLD



9 INDUSTRY CLUSTERS



BIO-HEALTH SECTOR

136 COMPANIES, HALF OF WHICH ARE UNDER

10 years old

(LUXINNOVATION 2021)

"Luxembourg is a European capital city."  
Michel Gonzalez and Xavier Michely, KEYM



LUXEMBOURG CITY IS HOME TO

13 EUROPEAN INSTITUTIONS



THE SPACE SECTOR COMPRISES

50 companies

AND RESEARCH LABORATORIES WITH A TOTAL WORKFORCE OF

800 PEOPLE

(TRADE & INVEST)

"Luxembourg has a very strong space ecosystem (companies, university, space agency), with a high political support."

Sebastain Ströhl and Carlos Manuel Entrena Utrilla, Plus Ultra Space Outposts

## STABLE AND POLITICALLY NEUTRAL

"Luxembourg's stable legal system paves the way for long-lasting business ventures. The country has the assets to attract the profiles we need."

Dr. Chalom Sayada, Advanced Biological Laboratories (ABL)



8

PRIME MINISTERS SINCE 1945

## ICT / DIGITALISATION



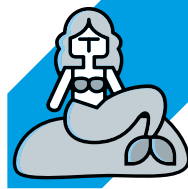
Over 9 in 10 households

HAVE ACCESS TO BROADBAND (97% IN 2021, EUROSTAT)



890,000

MOBILE PHONE CONTRACTS IN 2020 FOR AROUND 626,000 INHABITANTS (WORLD BANK)



THE SUPERCOMPUTER

Meluxina

DEVELOPED IN 2021 HAS CALCULATING POWER OF 18 PETAFLOPS (18 TRILLION OPERATIONS PER SECOND) AND IS RANKED AMONG THE WORLD'S TOP

50 COMPUTERS FOR HIGH-PERFORMANCE CALCULATION



23 DATA CENTRES OF WHICH 9 ARE TIER IV CERTIFIED



310

COMPANIES OPERATING IN CYBERSECURITY INCLUDING 75 START-UPS (24%) (LUXINNOVATION 2020)

## OPEN ECONOMY

30%

OF NON-FINANCIAL RETAIL COMPANIES ARE UNDER FOREIGN CONTROL (STATEC)



LUXEMBOURG EXPORTS OVER

60%

OF ITS GOODS AND SERVICES (STATEC)

## SUPPORT FOR START-UPS AND SMES



over 2,000

START-UPS FROM 80 COUNTRIES HAVE APPLIED FOR THE FIT4START PROGRAMME SINCE ITS LAUNCH IN 2010

"The business environment in Luxembourg is very dynamic. The ecosystem is favourable to SMEs and several sectors of the future are booming."  
Christophe Timmermans, SolarCleano



THE COUNTRY HAD 507

START-UPS IN 2020, OF WHICH 23 (5%) WERE OPERATING IN THE "GREEN TECHNOLOGY" FIELD (STARTUPLUXEMBOURG)



3 programmes

DEVELOPED BY LUXINNOVATION, THE NATIONAL INNOVATION AGENCY, TO ALLOW SME TO BECOME MORE COMPETITIVE: FIT4DIGITAL, FIT4INNOVATION AND FIT4SUSTAINABILITY

## COMPETITIVENESS



WITH 25

RECOGNISED PROJECTS, LUXEMBOURG IS EUROPE'S

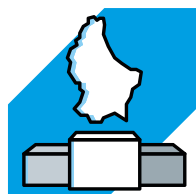
No. 1

COUNTRY FOR FOREIGN DIRECT INVESTMENTS PER INHABITANT

(3,94 PROJECTS PER 100,000 INHABITANTS, EY)

"Luxembourg allows us to position ourselves quickly in the various countries we target."

Samuel Eustachi, Philippe Vallogia and Maxime Belair, Jobook



LUXEMBOURG CONSISTENTLY RANKS IN THE WORLD'S

TOP 20

MOST COMPETITIVE COUNTRIES (WEF, IMD, EUROPEAN COMMISSION, ETC.)



Economic information on the Grand Duchy



I want to set up or invest in Luxembourg



Luxembourg, dynamic economy

Chambre of Commerce

7 rue Alcide de Gasperi, L-1615 Luxembourg

Tel.: (+352) 42 39 39-1 ; Email: chamcom@cc.lu ; www.ccl.lu

September 2022

## EUROPEAN LOGISTICS HUB



**947,000**

TONNES OF GOODS TRANSPORTED IN 2020 ON

**13,588**

FLIGHTS, I.E. A RISE OF OVER

**6%**

IN AIR FREIGHT VERSUS 2019



LUXEMBOURG RANKS

**24<sup>th</sup>**

OF 160 COUNTRIES (LOGISTICS PERFORMANCE INDEX 2018)



**60%**

OF GOODS TRANSPORTED BY LORRY ARE BOUND FOR INTERNATIONAL DESTINATIONS



**800**

DIRECT FLIGHTS PER WEEK FROM LUXEMBOURG AIRPORT TO

**104**

DESTINATION

## EDUCATION



**44.5%**

OF INHABITANTS AGED BETWEEN 15 AND 64 HAVE A HIGHER EDUCATION DIPLOMA (2021), WHICH IS ABOVE AVERAGE FOR THE EU (29.5%) (EUROSTAT)



**19**

**international schools**

IN LUXEMBOURG, 6 OF WHICH ARE STATE-FUNDED

## HIGH-QUALITY INFRASTRUCTURE



PUBLIC INVESTMENT REPRESENTS

**over 4%**

OF GDP

"Luxembourg is a great Startup Hub that puts a lot of effort into promoting innovative ideas and projects, with excellent infrastructure."

Maroun Altekly and Raphaël Scheuren, BlocHome

## QUALITY OF LIFE AND SAFETY



LUXEMBOURG CITY IS RANKED

**18<sup>th</sup>**

OF 231

GLOBAL CITIES FOR

QUALITY OF LIFE

(MERCER - QUALITY OF LIVING)

WHAT DO RESIDENTS OF LUXEMBOURG-CITY SAY:



**95%**

ARE HAPPY TO LIVE THERE

**94%**

ARE SATISFIED WITH THE STATE OF CLEANLINESS (HIGHEST SCORE IN THE EUROPEAN UNION)



**92%**

FEEL SAFE ON PUBLIC TRANSPORT (EUROBAROMÈTRE)



THE UNIVERSITY OF LUXEMBOURG (FOUNDED IN 2003) IS RANKED

**25<sup>th</sup>**

OF 540 UNIVERSITIES UNDER 50 YEARS OF AGE (TIMES HIGHER EDUCATION, YOUNG UNIVERSITY RANKINGS)

"Luxembourg is a springboard for creative ideas and innovations."

Thomas Lange, Culture Booking



THE R&D SECTOR EMPLOYS OVER

**7,000**

PEOPLE. RESEARCHERS REPRESENT

**1.3%**

OF THE TOTAL WORKFORCE (EUROSTAT)

"Luxembourg's intellectual property regulations are very advantageous for patent holders."

Constantin Notman, OCSIAI

## ADMINISTRATIVE TASKS MADE EASY



LUXEMBOURG IS RANKED

**4<sup>th</sup>** IN EUROPE

FOR THE **perceived quality**

OF ITS PUBLIC SERVICES (EUROBAROMÈTRE 2016)

## RESEARCH AND INNOVATION

### A LAND OF INDUSTRY

STEEL INDUSTRY ROOTED IN LUXEMBOURG SINCE

**1870**



ARCELOR MITTAL IS THE 6<sup>TH</sup> LARGEST PRIVATE EMPLOYER WITH

**3,460**

EMPLOYEES (JANUARY 2022)

EVERY YEAR, LUXEMBOURG'S POPULATION GROWS BY AROUND

**2%**



POPULATION GROWTH BETWEEN 1 JANUARY 2012 AND 1 JANUARY 2022

**23%**

## POPULATION

## MULTICULTURAL AND MULTILINGUAL

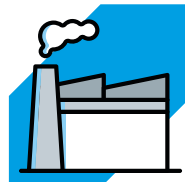
**51%** OF RESIDENTS SPEAK **3** OR MORE LANGUAGES (EUROSTAT)



LUXEMBOURG RANKS

**8<sup>th</sup>**

OF 134 COUNTRIES FOR COMPETITIVENESS IN TERMS OF ATTRACTING, RETAINING AND GROWING TALENT (GLOBAL TALENT COMPETITIVENESS INDEX)



**900**

INDUSTRIAL COMPANIES EMPLOYING OVER

**38,000**

EMPLOYEES (STATEC)



INDUSTRIAL COMPANIES' ANNUAL INVESTMENT AMOUNTS TO

**€570**

MILLION (EUROSTAT)



THE INDUSTRIAL SECTOR REPRESENTS

**6.7%**

OF GDP AND

**7.8%**

OF THE COUNTRIES' WORKFORCE (OVER 36,000 PEOPLE) (STATEC)

THE FOREIGN POPULATION REPRESENTS **47%** OF INHABITANTS AND **179**



**nationalities**



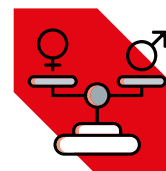
**74%**

OF THE WORKING POPULATION IS FOREIGN (STATEC)

"Luxembourg's multiculturalism makes it the perfect place to start a global company."

Roman Salvi and Loris Beaumont, Biscuit app

## GENDER EQUALITY



**0.7%**

GENDER PAY GAP - THE SMALLEST GAP IN THE EUROPEAN UNION

(GENDER PAY GAP EUROSTAT)